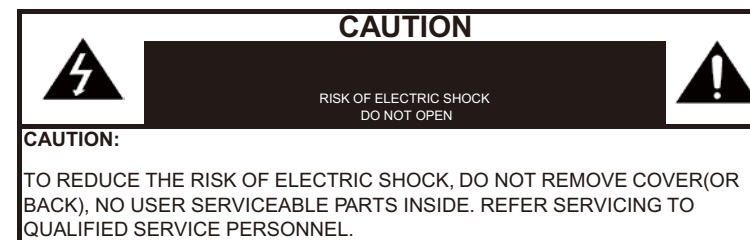


CCTV CAMERA USER MANUAL

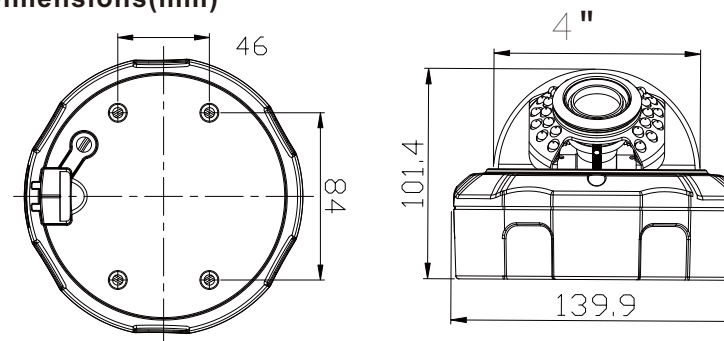
HD-SDI Dome Camera Model No.: VCD-320SDI-20IR

Image sensor	1/3" SONY Sensor
Effective Pixels	1920(H) X 1080(V)
Frame Rates	1080P @ 30/25fps (HD-SDI)
Minimum Illumination	Color : 0.1Lux @F1.2 / B/W : 0.01Lux @F1.2
OSD Menu	Built-in
Digital Video Output	BNC Connector HD-SDI X1
Analog Video Output	BNC Connector Composite X1 (CVBS or AHD)
S/N Ratio	50dB (AGC Off)
Lens Type	2.8mm~12mm
IR Cut Filter(ICR)	YES
On Screen Display	English/T_Chinese
WDR	Support
Digital Wide Dynamic Range	Adjustable
Day&Night Mode	Support
AGC	Adjustable
Dynamic Noise Reduction	Adjustable
Digital Zoom	Adjustable
Motion System	Support
Electronic shutter Speed	AUTO/MANUAL/FLK
Operating Temperature	-10°C ~ +50°C
Operating Humidity	Within 95% RH (Non-condensation)
Dimensions (mm)	139.9(L) * 101.4(H)
Weight	650g
Power Consumption	120mA / IR LED ON: 400mA Max
Power Supply	DC12V

Product specifications are subject to change without notice.



Dimensions(mm)



PRECAUTIONS

1. Be sure of power supply at DC12V(+/-15%).
2. Connect cables according to user manual, wrong connection may cause malfunction and/or damage to the camera.
3. Do not expose lens directly to the sunlight or dazzling object, CCD sensor can be damaged.
4. Do not install at extreme hot or cold place.
(Recommended operation temperature: -20°C ~ 50°C / -4°F ~ +122°F).

Notice:

Do not attempt to disassemble or repair yourself.
If any questions, please contact your sales directly.

A. Setup menu by coaxial control Button(OSD Button)

B. Yellow color cable: CVBS or AHD output.

(Push Button 5~10 seconds to switch. Default setting: CVBS output.)

C. Green color cable: HD-SDI output.